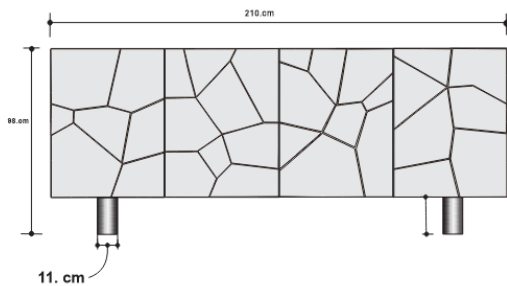


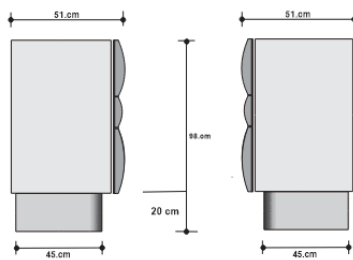
# PENTAGON SIDEBOARD - CHARCOAL

QOQET  
STUDIO

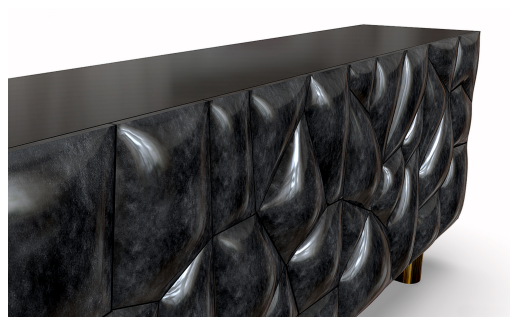
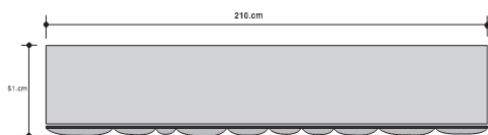
Front View



Side View



Top View



## Dimensions:

### Inches

82.75 W x 17.75 D x 38.50 H

### Cm

210.19 W x 45.09 D x 97.79 H

### Mm

2,102 W x 451 D x 978 H

A sideboard with intricately hand-carved multi-pattern doors, encased in charcoal-color parchment.

Body boasts high-polished resin finish. A luxurious masterpiece blending craftsmanship and elegance, offering an exceptional statement for refined interiors.

QOQET